

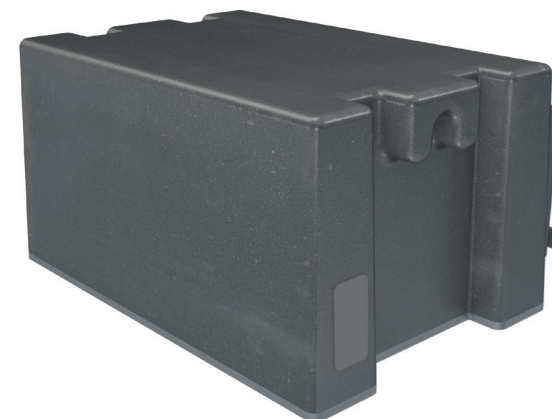
SAFE, POWERFULL, COMPACT DIMENSIONS

SOLARWATT MR PACK 2.2

- Powerful lithium-ion battery module for integration in SOLARWATT MyReserve battery system
- Depth of Discharge is 100%
- Unique battery efficiency of 99.2%
- Long service life > 15 years
- Plug & play installation with contact-protected and polarity-reversal-protected connecting plugs
- One-man installation possible (only 25 kg)
- Certified safety with multi-stage safety concept
- Integrated battery management system with VTC supervisor
- Single cell monitoring
- Dynamic Charge Estimator - dynamic adjustment of the charge current of the battery based on the current PV output and the household's internal consumption
- Maintenance-free
- No memory effect

Tested by an accredited testing laboratory:

CETECOM™



SMART PERFORMANCE CALCULATION:

- Calculation of the internal resistance per cell
- Determination of charging and discharging parameters in consideration of the internal resistance
- Calculation of SoC and SoH

SOLARWATT Service



SOLARWATT FullCoverage
inkluded*



Competent Consulting
Experts via Hotline or on location



10 Jahre
Warranty
min. 80 % Capacity**



Made in Dresden
Country of origin
Quality made in Germany



Take-back service
acc. to BattG



Energy Manager ready
perfect system integration

* as far as there is an Inverter used, that is acc. to „SOLARWATT MyReserve - Aproofed Inverters“
** Performance warranty min. 80% capacity of the battery modules MR Pack 2.2

SOLARWATT GmbH | Maria-Reiche-Str. 2a | 01109 Dresden | Germany
Tel. +49 351 8895-333 | Fax +49 351 8895-111 | www.solarwatt.de
Certified acc. to DIN EN ISO 9001 and 14001 | BS OHSAS 18001:2007

Technische Daten | SOLARWATT MR Pack 2.2

GENERAL SPECIFICATIONS

Model name	SOLARWATT MR Pack 2.2
Rated capacity	2,2 kWh
Depth of Discharge (DoD)	100 %
Cell technology	Li-ion
Cell separator	Ceramic coating
BMS	VTC Supervisor ¹⁾
Cycle service life	4100 full cycles with DoD 100%, 1C charge/ 1C discharge, @ 80% EOL, 25°C
Maximum efficiency	99.2%
Weight	25Kg
Dimensions (W x H x D)	384mm X 200.5mm X 277mm (Depth: 260mm without fastening points)
Housing	Aluminum
Communication	CAN
Power connections	Power plug with integrated communication (contact-protection and polarity-reversal protection) ²⁾
Battery fuse	Integrated
Warranty ³⁾	10 years

ENVIRONMENTAL AND AMBIENT CONDITIONS

Permissible environmental operating temp.	0°C to 30°C (max. 45°C) ⁴⁾
Permissible storage temperature	-20°C to 30°C
Permissible transport temperature	-20°C to 55°C
Relative air humidity	≤ 85% non-condensing
Protection rating	IP54 (with protective cover on the power plug outlet, otherwise IP20)
Installation location	Up to 2000m above sea level

- 1) Continuous monitoring of all cell voltages, cell temperatures, and current. Shut-off of the system when parameter limits are exceeded.
- 2) The battery poles are voltage-free when the battery is removed
- 3) The corresponding warranty conditions apply
- 4) MyReserve does not operate at temperatures below -15°C or above +45°C. Unrestricted performance is provided for the household in the temperature range of 0°C to 30°C. Accelerated aging of the cells should be taken into account at temperatures above +45°C.

SUPPORTED DEVICES

Battery system	SOLARWATT MyReserve 500, SOLARWATT MyReserve 800
----------------	--

CERTIFICATIONS AND STANDARDS

tested by accredited testing laboratories acc. to	UN38.3 As a part of MyReserve: Safety Guidelines for Li-ion household battery system Version 1.0 E DIN EN 62619:2014 (VDE 0510-39) UN38.3 DIN EN 50272-1:2011 (VDE 0510-1) E DIN EN 61427-2:2014 (VDE 0510-41) DIN EN 61010-1:2011 (VDE 0411-1) DIN EN 61000-6-1:2007 (VDE 0839-6-1) DIN EN 61000-6-3:2011 (VDE 0839-6-3)
Conformity to	EU-Directives (CE): 2014/35/EU (LVD) 2014/30/EU (EMC) 2011/65/EU (RoHS)
Cells (among others) tested acc. to:	UN38.3 Automotive-Standards (EUCAR Abuse Level 3)

DIMENSIONS

